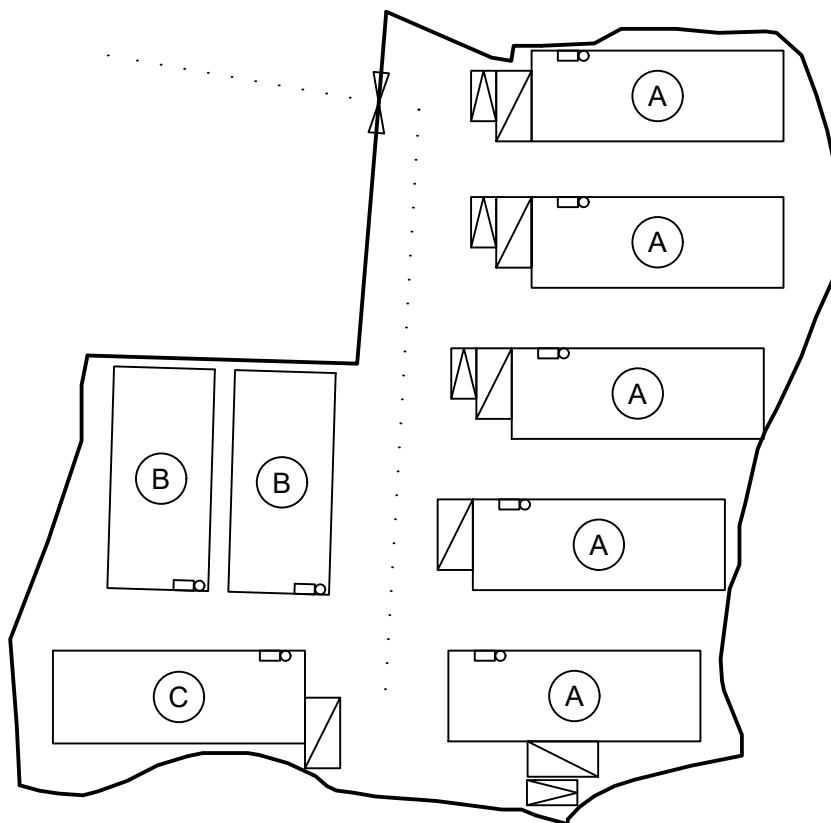


## Proposed Structures Details



	Structures	Gross Floor Area (GFA)	Height (Not Exceeding)	No. of Storey	Unit(s)
A	Warehouse (Excluding D.G.G.) Ancillary Office	About 25m x 9m = 225 m <sup>2</sup>	8m	1	5
B	Warehouse (Excluding D.G.G.) Ancillary Office	About 22m x 10m = 220 m <sup>2</sup>	8m	1	2
C	Warehouse (Excluding D.G.G.) Ancillary Office	About 25m x 9.2m = 230 m <sup>2</sup>	8m	1	1
	Total	About 1,795 m <sup>2</sup>			
	Private Car Parking Space	5m x 2.5m			4
	LGV L/UL Space	7m x 3.5m			6



\*All FSI (includes installation/maintenance/modification/repair work) will be completed by RFSIC.

For Emergency Vehicular Access, Please see Appendix 8.1

\*All the enclosed structures are provided with access for emergency vehicles to reach within 30m travel distance from the structures.

### Legend:

- 5 kg Portable Dry Powder Type Fire Extinguisher (8 in Total)
- Emergency Lighting (BS 5266-1:2016, BS EN 1838:2013 and the FSD Circular Letter No. 4/2021) (8 in Total)
- Emergency Vehicular Access
- ▤ Private Car Parking Space
- ▥ LGV L/UL Space
- (A) Warehouse (Excluding D.G.G.) with Ancillary Office
- (B) Warehouse (Excluding D.G.G.) with Ancillary Office
- (C) Warehouse (Excluding D.G.G.) with Ancillary Office

### Appendix 8

Location: DD 109 Lot 1325 (Part)  
DD 109 Lot 1349 (Part)

OZP: S/YL-KTN/11  
District: Kam Tin North  
Zoning: Agriculture

Date: 3 May 2025

### Proposed Fire Service Installation Plan

擬議消防設備安裝計劃圖  
擬議臨時貨倉（危險品倉庫除外）連附屬  
設施（為期3年）及相關填土工程

Proposed Temporary Warehouse (excluding  
Dangerous Goods Godown) with Ancillary  
Facilities for a Period of 3 Years and Associated  
Filling of Land

### SCALE

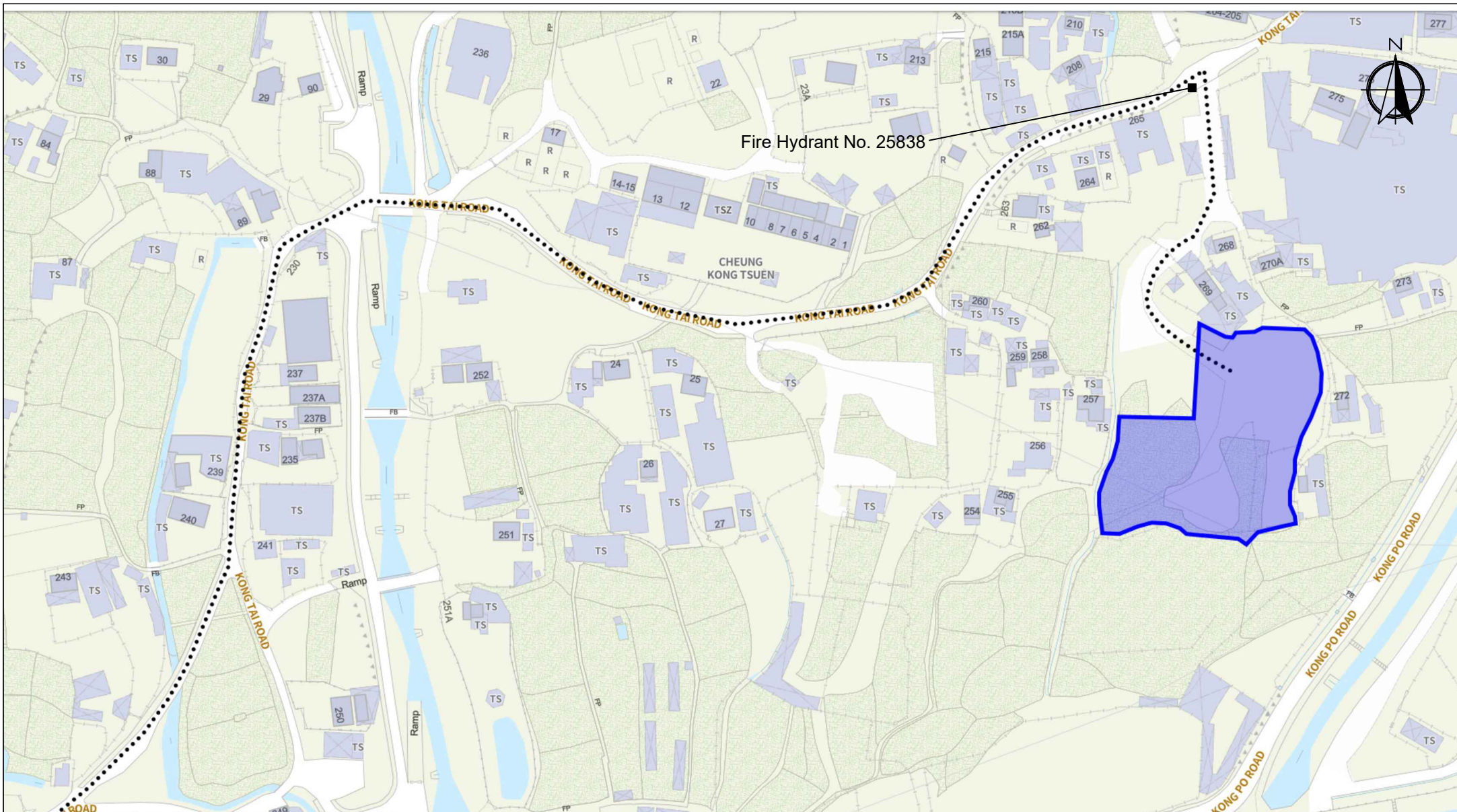
1:750

@A4

For Identification Only

Drawing No.:

8-01



Scale: Undefined @A4

Captured from map.gov.hk on 30<sup>th</sup> December 2024

## Appendix 8.1

### Emergency Vehicular Access

Location: D.D. 109 Lot 1325 (Part), D.D. 109 Lot 1349 (Part)  
OZP: S/YL-KTN/11  
District: Kam Tin North  
Zoning: Agriculture

### Project:

Proposed Temporary Warehouse (excluding Dangerous Goods Godown) with Ancillary Facilities for a Period of 3 Years and Associated Filling of Land

Width of Shui Mei Road: 3-5m (About)

### Map Legend:

- Road Path
- Site Boundary

Drawing No.:  
8.1-1

For Identification Only

Date: 03/05/2025